

WORK-BASED LEARNING BUSINESS PARTNERS

Some of the area businesses that are currently providing learning opportunities to our students include:

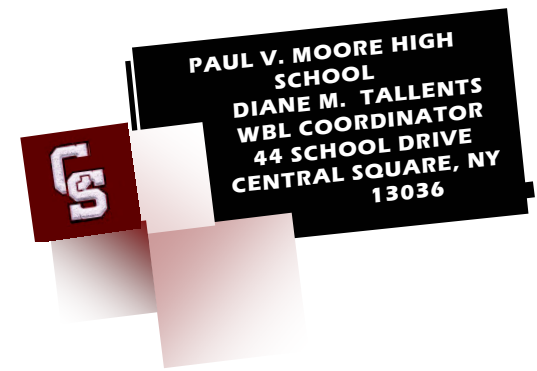
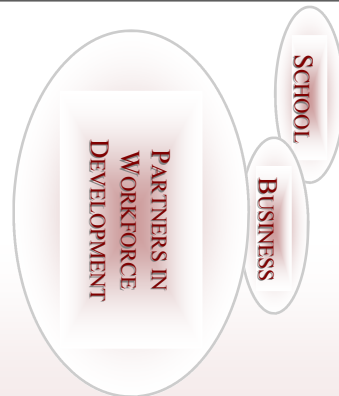
- New York State Police
- Biz Events
- Highland Animal Hospital
- Central Square School District
- University Hospital
- White Law Firm
- Fairway Physical Therapy
- 5 Star Events
- Schneider Equipment Packaging, Inc.
- Wal-Mart

Linking Learning to Life



Paul V. Moore High School
 Diane M. Tallents
 WBL Coordinator
 44 School Drive
 Central Square, NY 13036

Mailing Address Line 1
 Mailing Address Line 2
 Mailing Address Line 3
 Mailing Address Line 4
 Mailing Address Line 5



WORK-BASED LEARNING EXPERIENCE PROGRAM

Linking business and educational communities together to provide learning opportunities for students.



Linking Learning to Life

WHY LINK THE BUSINESS AND SCHOOL COMMUNITIES?

Career development is more important now than in the past because of the changes in the world of work. Due to these changes, which are a result of a global economy, technology innovations, an increase in skilled occupations, and the types of careers available, schools and businesses need to partner together in an effort to better prepare the future workforce.



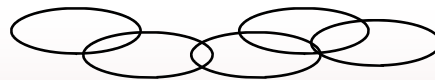
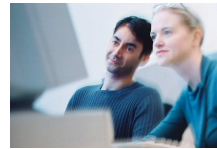
Business leaders concur that high academic skills provide for a quality workforce. When a partnership exists between the educational and vocational settings, students are able to experience the relevancy of what they learn in school to the world of work.. This partnership provides for:

- **School-based Learning:** integrating academics, career development, and workforce preparation through curriculum and instruction.
- **Work-based Learning:** providing experiences for students in businesses that relate academic instruction to career interests and *relevancy* in the workplace. Additionally, students will be gaining the necessary workplace competencies and skills while participating in the experience.

EMPLOYER BENEFITS

Other partners in this cooperative endeavor have indicated the following benefits:

- The company is recognized by the community as a good corporate citizen.
- Businesses can achieve productivity gains.
- Students are a source for recruiting needs.
- Students have an opportunity to work along side adults in a worksite which isn't possible in school.
- Future employees now have the necessary hard and soft skills needed.
- A strong, better equipped workforce benefits the community and ultimately the economy.
- A pool of skilled and motivated potential employees are being developed and trained.
- Employers are involved along with the schools in the curriculum development process.
- Training and recruiting costs are reduced.
- Employers have the unique opportunity to provide contextual and relevant learning for the students, hence lowering the drop-out rate.
- Help students make the connection between academics and the world of work.



WAYS FOR BUSINESSES TO COLLABORATE WITH SCHOOLS

The Work-based Learning Coordinator will discuss in greater detail the various options available for your company's involvement in a School-to-Career Partnership.

Internships—students participate in an unpaid work experience for a minimum of 75 hours.

Job Shadows— students observe occupations for several hours during a pre-arranged day.

Guest Speakers—employers present information about their career field in a classroom setting.

Company Tours—provide opportunities for students and teachers to take tours of the business to learn different aspects of the industry.

Teacher Job Shadows—provide opportunities for teachers to work at the company so they can learn more about the company, what's happening in the world of work, etc.

Paul V. Moore High School
Diane M. Tallents, WBL Coordinator
44 School Drive
Central Square, NY 13036

Phone: 315-668-4231, ext. 1310

Fax: 315-668-4234

Email: dtallents@cssd.org